

CP1R*-W

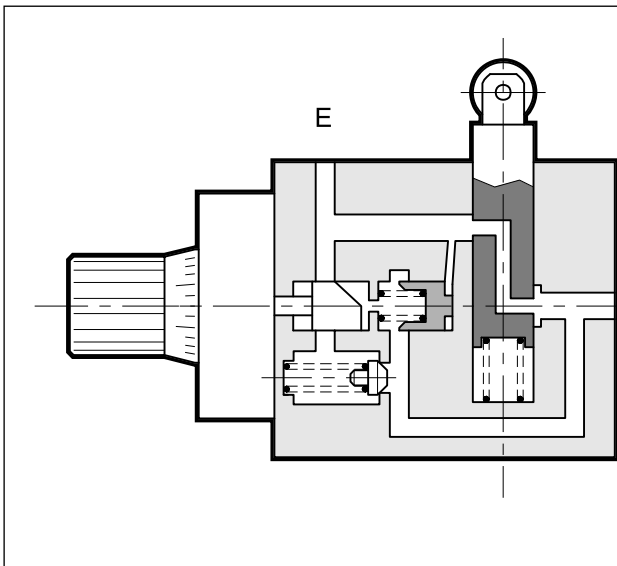
ROLLER OPERATED FAST/SLOW SPEED SELECTION VALVE

SERIES 21

THREADED PORTS

p max 70 bar
Q max 40 l/min

OPERATING PRINCIPLE



- The CP1R*-W valve is used for the selection and control of fast/slow speed of hydraulic axis by mechanical roller operation.
- The slow working speed adjustment is obtained by using a pressure compensated flow control valve.
- The special shape of the control openings allows fine adjustment even with very low flow rates.
- Adjustment of the flow rate is carried out with three turns of the knob that can be locked in any position with a screw.
- It is available in two configurations:
normally open CP1RA,
normally closed CP1RC.
- It is supplied with an incorporated check valve that allows free passage of the reverse flow.

CONFIGURATIONS (see Hydraulic symbols table)

- CP1RA-W: normally open - fast movement with roller in rest position and controlled slow movement with roller in operation.
- CP1RC-W: normally closed - controlled slow movement with roller in rest position and fast movement with roller in operation.

PERFORMANCES (obtained with mineral oil with viscosity of 36 cSt at 50°C)

Maximum operating pressure	bar	70
Fast movement maximum flow rate	l/min	40
Controlled slow movement flow rate	max	l/min 4 - 10 - 16
	min	l/min 0,1
Roller working movement	mm	6
Ambient temperature range	°C	-20 / +50
Fluid temperature range	°C	-20 / +80
Fluid viscosity range	cSt	10 ÷ 400
Fluid contamination degree	According to ISO 4406:1999 class 20/18/15	
Recommended viscosity	cSt	25
Massa	kg	3,2

HYDRAULIC SYMBOLS

